

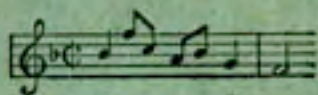
*Pádraig O'Keefe*



*Instruction for fiddle*

Volume 2

# MANUSCRIPT MUSIC BOOK



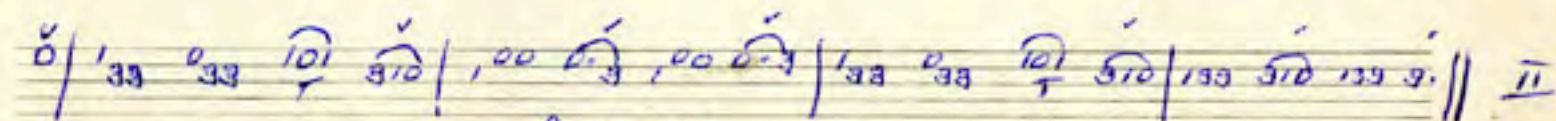
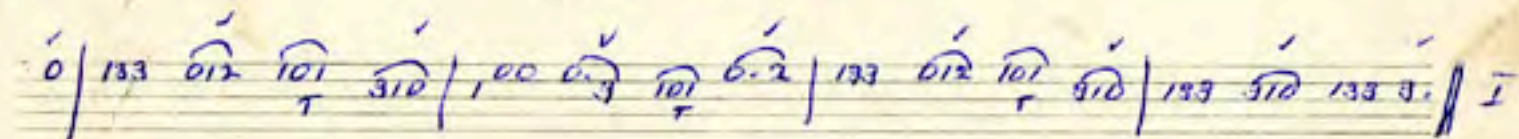
SIX STAVES

No. M1

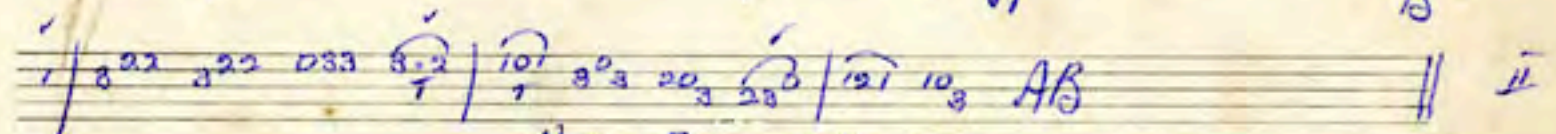
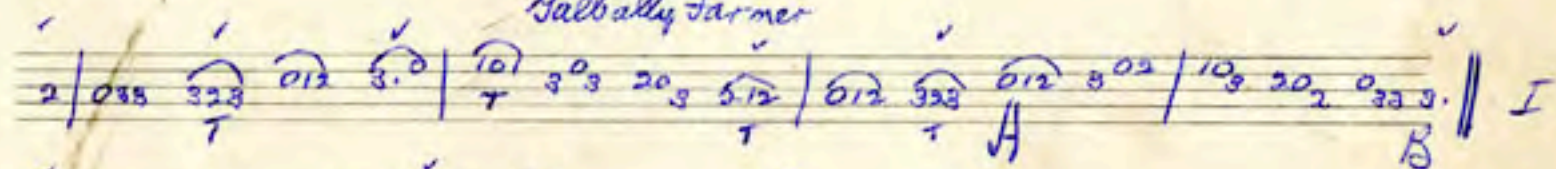
THE EDUCATIONAL COMPANY OF IRELAND  
LIMITED



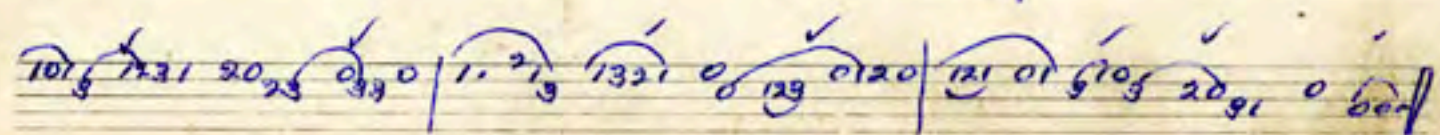
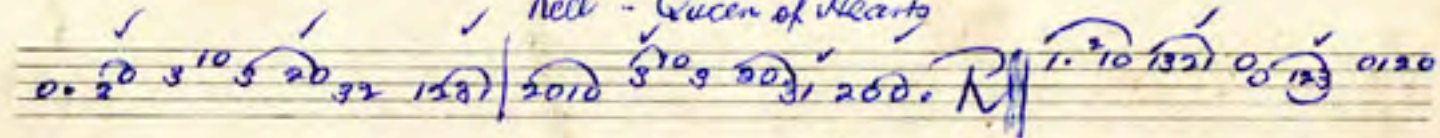
Fig. leg of the duck



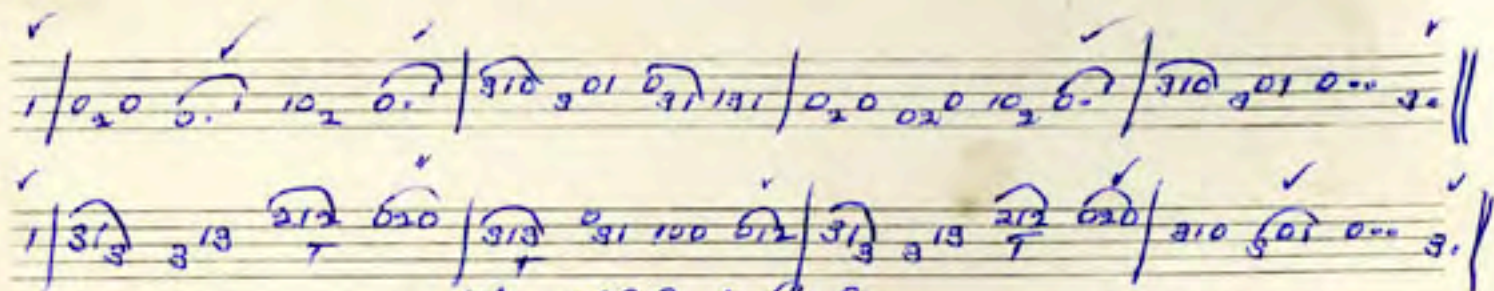
Galbally Jarner



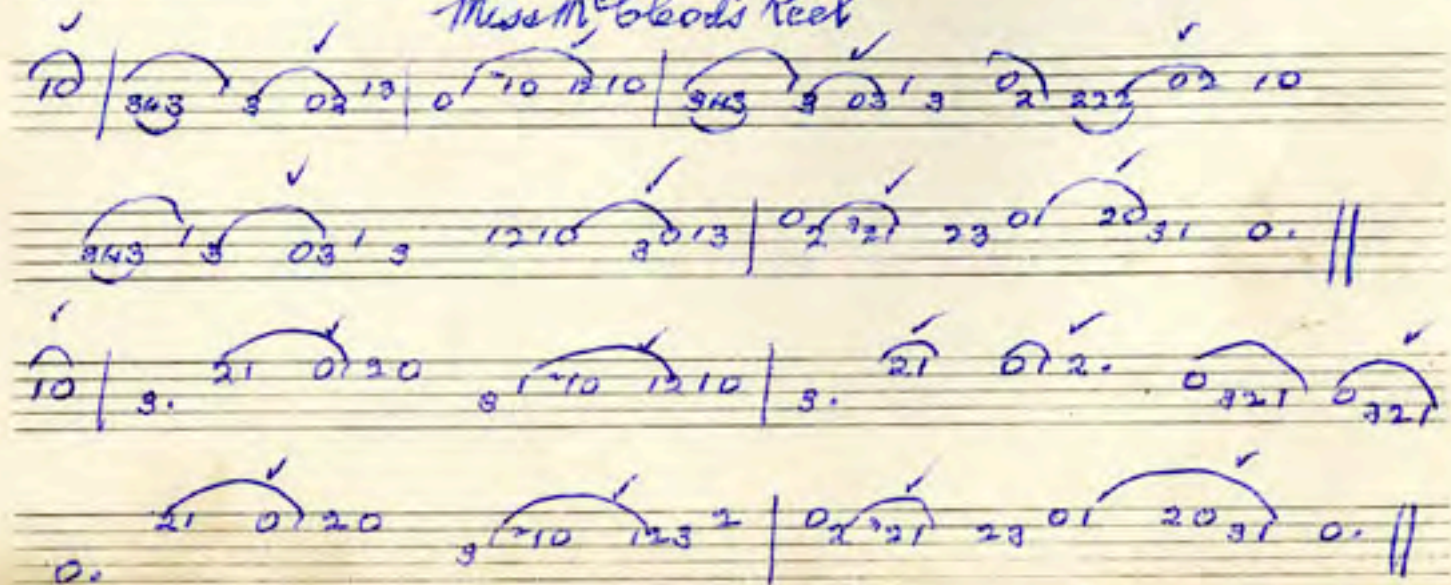
Reel - Queen of Hearts



Jug. House in the Glen



Miss McLeod's Reel



# Byrne's Ape

$\overset{1}{012}$  |  $323^0$   $\overset{1}{3}13$  |  $2123$   $42$   $31$  |  $0_3 01$   $212$   $0$  |  $3120$   $3210$  |  $323^0$   
A

$\overset{1}{3}13$  |  $2123$   $42$   $31$  |  $0^0 32$   $\overset{1}{3}02$  |  $3^0 10$   $3 \cdot 2$  ||

$\overset{1}{12}$  |  $3^0 32$   $123^1$  |  $0_2 0_3$   $2^0 0^1$  |  $23^1 3$   $2121$  |  $0_3 21$   $0 \cdot 31$  AB

$\frac{8}{5} = \frac{16}{52}$

# Jug. Rambling Pitchfork

Handwritten musical notation for 'Jug. Rambling Pitchfork'. The piece is written on three staves. The first staff begins with a treble clef and a 2/4 time signature. The notation consists of rhythmic patterns represented by numbers and dots, with some notes beamed together. The second and third staves continue the piece, with the third staff ending with a double bar line and a repeat sign. There are checkmarks above the first and second staves, and a Roman numeral 'II' at the end of the third staff.

# 1. Jug-Munster Buttermilk

Handwritten musical notation for '1. Jug-Munster Buttermilk'. The piece is written on two staves. The first staff begins with a treble clef and a 2/4 time signature. The notation consists of rhythmic patterns represented by numbers and dots, with some notes beamed together. The second staff continues the piece, ending with a double bar line and a repeat sign. There are checkmarks above the first and second staves.

Fig. Saddle the pony.

1 | 0<sup>20</sup> 10<sub>2</sub> 0<sup>21</sup> 12<sup>0</sup> | 0<sup>21</sup> 10<sub>2</sub> 0<sup>21</sup> 12<sup>3</sup> | 0<sup>20</sup> 10<sub>2</sub> 0<sup>21</sup> 12<sup>0</sup> | 0<sup>1</sup> 2<sup>0</sup> 1<sup>0</sup> 2<sup>00</sup> 0<sup>0</sup> || I

1 | 2<sup>00</sup> 3<sup>11</sup> 2<sup>00</sup> 0<sup>20</sup> | 2<sup>00</sup> 3<sup>11</sup> 0<sup>20</sup> 1<sup>0</sup> | 2<sup>00</sup> 3<sup>11</sup> 2<sup>00</sup> 0<sup>31</sup> | 0<sup>20</sup> 1<sup>0</sup> 2<sup>00</sup> 0<sup>0</sup> || II

3<sup>0</sup> | 1<sup>21</sup> 0<sup>10</sup> 3<sup>0</sup> 2<sup>3</sup> | 1<sup>23</sup> 0<sup>13</sup> 0<sup>1</sup> | 2<sup>10</sup> 3<sup>1</sup> 2<sup>12</sup> | 0<sup>10</sup> 3<sup>1</sup> 0<sup>0</sup> 3<sup>0</sup> | 1<sup>31</sup> 0<sup>10</sup>

He - Rights of man

3<sup>10</sup> 3<sup>1</sup> | 1<sup>28</sup> 0<sup>13</sup> 0<sup>1</sup> | 2<sup>10</sup> 3<sup>1</sup> 1<sup>0</sup> 1<sup>23</sup> | 0<sup>0</sup> 1<sup>0</sup> 1<sup>0</sup> ||

2<sup>3</sup> | 0<sup>242</sup> 0<sup>12</sup> 3<sup>1</sup> | 0<sup>242</sup> 0<sup>12</sup> 1<sup>0</sup> | 0<sup>0</sup> 2<sup>0</sup> 0<sup>13</sup> 1<sup>1</sup> | 0<sup>3</sup> 3<sup>1</sup> 3<sup>1</sup> 3<sup>1</sup> |

0<sup>3</sup> 0<sup>1</sup> 2<sup>123</sup> | 0<sup>432</sup> 3<sup>1</sup> 2<sup>10</sup> 1<sup>0</sup> | 2<sup>10</sup> 1<sup>0</sup> 1<sup>23</sup> 0<sup>12</sup> | 0<sup>0</sup> 1<sup>0</sup> 1<sup>3</sup> ||



Reel - Swallow's Tail

Handwritten musical notation for 'Reel - Swallow's Tail' on three staves. The notation consists of rhythmic figures and notes with stems, often grouped by slurs. The first staff contains four measures. The second staff contains four measures, with a 'B' marking at the end. The third staff contains four measures, with a 'B' marking at the end. The notation includes various rhythmic values such as 21, 0 6 10, 13 01, 20 31, 32 3, 21 3 0, 13 01, 2. 12, 0 6 10, 0 6 10, 13 01, 21 12, 0 12 0, 31 3 1, 0 12 0, 1 3 01, 18, 0 3 3 2, 3 2 0 3, 13 01, 10 31, 3. 1 3, 3 3 1 3, 13 01, 2. 12, 0 3 3 2, 3 2 0 3, AB.

Polka - Galope

Handwritten musical notation for 'Polka - Galope' on two staves. The notation consists of rhythmic figures and notes with stems, often grouped by slurs. The first staff contains two measures, with a 'B' marking at the end. The second staff contains two measures, with a 'B' marking at the end. The notation includes various rhythmic values such as 0 3, 3 1, 3 1 3, 13 2 1, 3 1, 10 0 3, 12 10, 3, 0 3, 3 1, 3, 13 2 1, 3, 3 10 0 3, 3 1 3, 3 1 10 0 3, 12 10, AB.

5/12  
52

# High ball tap

1  
 10 | 3 30 | 2 | 0120 3130 | 1 0 0 30 | 1 0 0 10 | 3 30

2 | 0120 3101 | 3 1 1 01 | 3 1 1 || 01 | 2123 2103 | 0120 3131 |

0 3 3 23 | 4 3 3201 | 2123 4321 | 0120 3101 | 3 1 1 01 | 3 1 1 || II

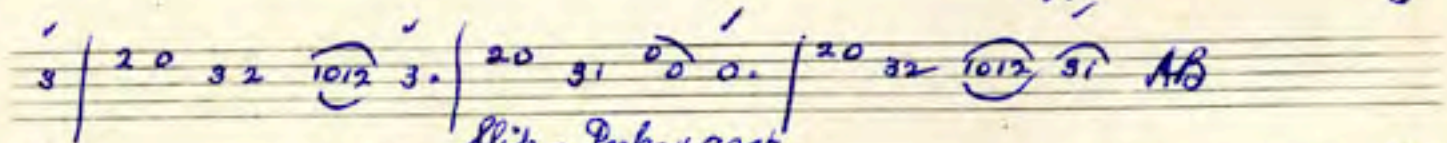
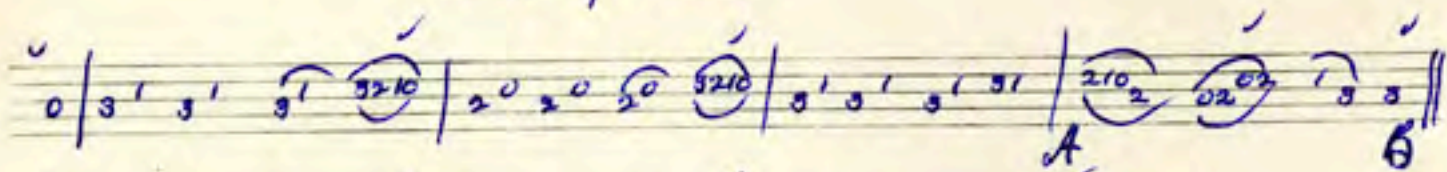
## Jug. Harry the Jug.

101 3.0 103 212 | 010 210 0.0 210 | 101 3.0 103 230 | 131 032 1.. 0.. || IR

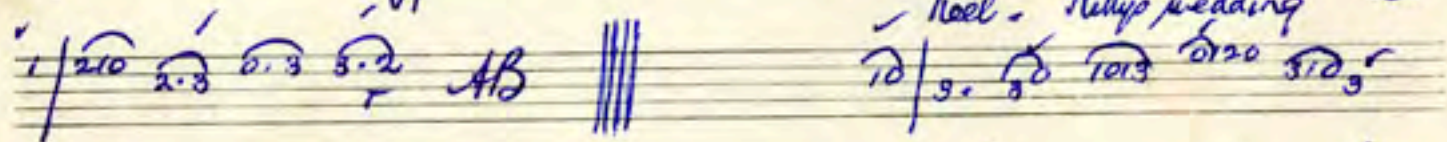
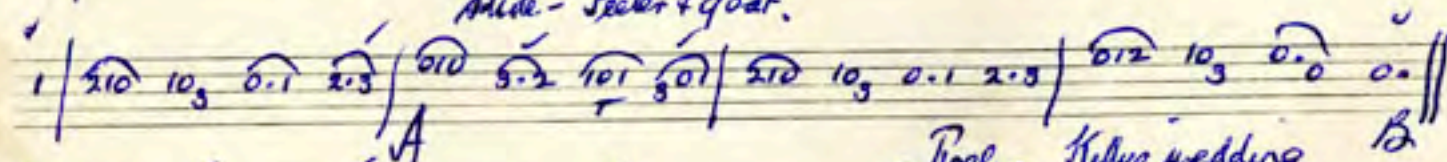
020 3.0 101 3.1 | 020 3.0 102 020 | 1.0 0.1 212 0.3 | 00 030 131 031 |

020 3.0 101 3.1 | 020 3.0 103 210 | 101 3.0 103 230 | 131 032 1.. 0.. || II

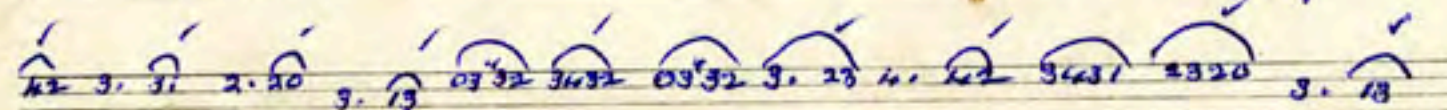
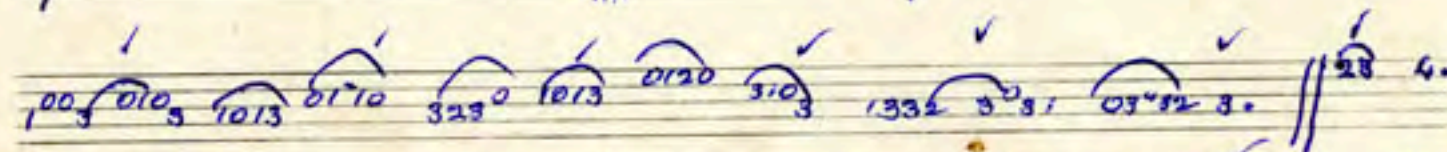
# Rakes of Mallow



Slide - Pecker + goat.



Reel - Kelly's wedding



5/1/53

02'21 2320 3<sup>2</sup>21 2. //

Seq:- Lark in the morning

<sup>^</sup> 0<sub>2</sub>0 0<sub>2</sub>0 1<sub>3</sub>1 131 | 0<sub>2</sub>0 013 10<sub>3</sub> 131 | 0<sub>2</sub>0 0<sub>2</sub>0 131 101 | 3<sup>01</sup> 310 1<sub>3</sub>1 101 | I

3<sup>01</sup> 313 431 310 | 3<sup>14</sup> 310 131 101 | 3<sup>01</sup> 313 431 313 | 3<sup>12</sup> 101 031 101 | II

3<sup>11</sup> 101 101 101 | 3<sup>11</sup> 101 031 101 | 3<sup>11</sup> 101 101 103 | 1231 310 103 131 | III  
A B

033 133 033 133 | 033 133 031 10<sub>2</sub> | 033 133 033 133 113 | IV

02'21 2320 3<sup>2</sup>21 2. //

Seq:- Lark in the morning

<sup>^</sup> 0<sub>2</sub>0 0<sub>2</sub>0 1<sub>3</sub>1 131 | 0<sub>2</sub>0 013 10<sub>3</sub> 131 | 0<sub>2</sub>0 0<sub>2</sub>0 131 101 | 3<sup>01</sup> 310 1<sub>3</sub>1 101 | I

3<sup>01</sup> 313 431 310 | 3<sup>14</sup> 310 1<sub>3</sub>1 101 | 3<sup>01</sup> 313 431 31<sub>3</sub> | 3<sup>12</sup> 101 0<sub>3</sub>1 101 | II

3<sup>11</sup> 101 101 101 | 3<sup>11</sup> 101 0<sub>3</sub>1 101 | 3<sup>11</sup> 101 101 10<sub>3</sub> | 3<sup>12</sup>31 310 10<sub>3</sub> 131 | III  
A B

033 1<sub>33</sub> 0<sub>33</sub> 1<sub>33</sub> | 033 1<sub>33</sub> 0<sub>31</sub> 10<sub>2</sub> | 033 1<sub>33</sub> 0<sub>33</sub> 1<sub>33</sub> 113 | IV

19/1/53

# Jig: Jolly old man (or "Old man Dillon")

Handwritten musical notation for the first system, consisting of three staves. The notation includes notes, rests, and bar lines, with some notes grouped by slurs and some having '3' written below them, possibly indicating triplets. The first staff ends with a double bar line and a fermata-like symbol.

## Knocknabul reel

Handwritten musical notation for the second system, consisting of two staves. The notation includes notes, rests, and bar lines. The first staff has a double bar line and a fermata-like symbol. The second staff ends with a double bar line and a fermata-like symbol.

Slide

|| 0.0 0.3 101 3-1 | 0.0 0.3 101 31 3 | 0.0 0.3 101 3.0 | 2.5 2.0 3-1 0-3 || I

012 3.4 3.2 0.3 | 012 3.4 3.2 0.1 | 2.1 2.0 310 3.0 | 101 3.0 1.0 0.0 || II

Spe - Flowers of Edinburgh

31 0. 01 3. 3 0 1013 210 3 2312 0123 0 202 1031 0 2 01 323 0

1013 0120 310 5 123 0 1. 3. 3. || 15 | 2. 21 3132 101 3 1321

0 3 01 210 3 1. 0. 0. 20 31 3 0 1013 0131 2120

Air - Maid of Sweet Strabane

3 1 0 0 0 3 2-2 3. 0 1 31 0.0 0... I | 0.1 3.0 3.5 2.4 3.2 0 3 0 2... II

Repeat & finish with I

# Long jig - Amours of Bardon

Handwritten musical notation for the first system, labeled 'A'. It consists of two staves. The first staff begins with a treble clef and a 2/3 time signature. The notation includes various rhythmic patterns such as eighth and sixteenth notes, often beamed together, and rests. The second staff continues the melody with similar rhythmic structures. The system concludes with a double bar line and a repeat sign.

## Reel - The Skylark.

Handwritten musical notation for the second system, labeled 'Reel - The Skylark'. It consists of four staves. The first staff begins with a treble clef and a 3/4 time signature. The notation features a mix of eighth and sixteenth notes, with some notes beamed together. The second staff continues the melody. The third staff shows a change in time signature to 3/8, indicated by a double bar line and a new time signature. The fourth staff concludes the piece with a final cadence. The system ends with a double bar line.



jiq

0/100 0<sub>2</sub>0 131 0<sub>2</sub>0 101 131 0<sub>2</sub>0 0<sub>2</sub>0 100 0<sub>2</sub>0 131 0<sub>2</sub>0 123 0<sub>2</sub>0 3..3. // I

0/101 131 010 0<sub>3</sub>0 101 232 123 432 101 3..1 010 0<sub>2</sub>0 123 0<sub>2</sub>0 3<sup>10</sup>3. // II

jiq

0/31 0<sub>2</sub>0 0<sub>2</sub>0 0. 31 0<sub>2</sub>0 123 012 31 0<sub>2</sub>0 0<sub>2</sub>0 0. | 31 0<sub>2</sub>0 133 3. | I  
A. B.

0/133 010 310 3.0 133 1.0 133 433 133 010 310 5.0 // II

Saka Farewell to Whiskey (2nd method)

2/10 0120 10<sub>2</sub>0 10 2102 00 20 131 0<sub>2</sub> 0<sub>2</sub>10 12 10 2101 20 0 //

2/0<sub>2</sub> 3<sub>2</sub> 0<sub>2</sub>10 12 0<sub>2</sub> 30 1012 00 //

3/4

Jig

1/31 7 823 0 20 020 123 012 10 3 0 20 3' 3 323 0 20 020 123 0 20 3-- 3.

2/31 7 813 210 31 3 2 0 2 131 01 3 210 3 0 3 813 210 31 3 123 0 20 3-- 3.

Reel

3. 0 3 201 3 010 3 0120 3. 0 3 201 3 012 3' 0 60. R

0 323 0120 0332 0120 0 323 0120 1320 1 3. 3.

0 323 0121 0332 0120 0332 0120 3. 43 320 2

*Alpe*

12 3. 13 2. 02 10<sub>3</sub> 1 0 201 2123 010 3 2123 0120

3213 2102 10<sub>3</sub> 1 0 2 012 3. 23 0332 1. 3. 3. //

0<sub>3</sub> 2123 0. 012 3<sup>10</sup> 3 3210 121 3 1 010 2<sup>0</sup> 3. 1. 1.

0<sub>3</sub> 2123 0. 012 323 1 02012 3. 23 0332 1. 3. 3. //

*Poco a*

1/01 2<sup>0</sup> 12 32 10<sub>2</sub> 0 10<sub>21</sub> 012 0 1232 10<sub>21</sub> 0. 0 *f*

0/10 2<sup>0</sup> 12 32 *AB*

14  
12  
53

Donegal Ape.

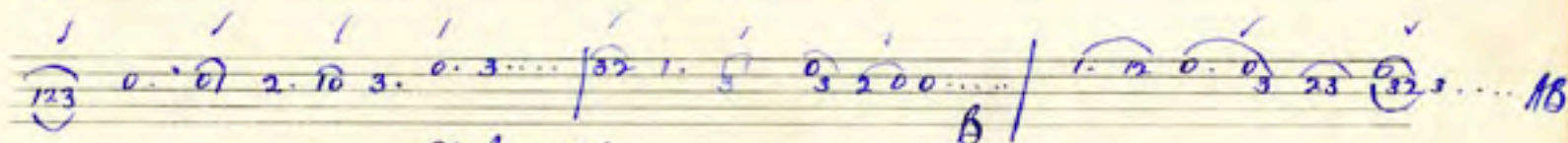
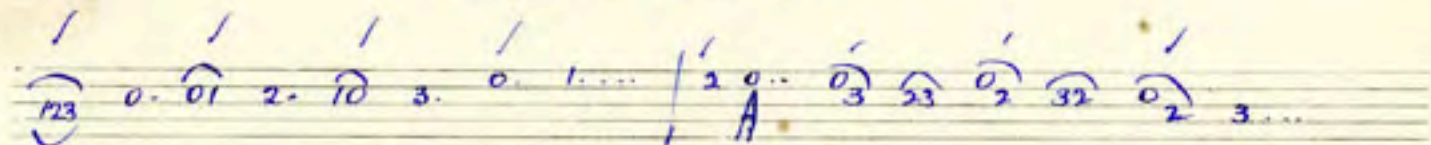
Handwritten musical notation for 'Donegal Ape.' consisting of four staves of music. The notation includes various rhythmic values (0, 1, 2, 3) and melodic lines with slurs and accents. The first staff begins with a circled '123'. The second staff ends with a double bar line and a 'B' section marker. The third staff contains a circled '012' and ends with a '10'. The fourth staff ends with a circled '3452' and an 'AB' section marker.

11/1/33

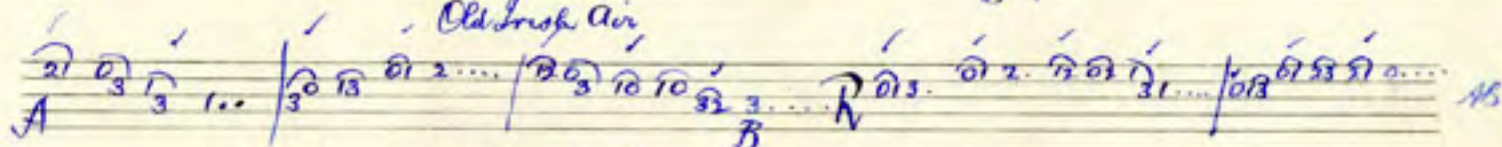
Isle of Inisfree

Handwritten musical notation for 'Isle of Inisfree' consisting of two staves of music. The notation includes rhythmic values and melodic lines with slurs and accents. The first staff ends with a circled 'A' section marker. The second staff begins with a circled 'B' section marker and ends with an 'AB' section marker.

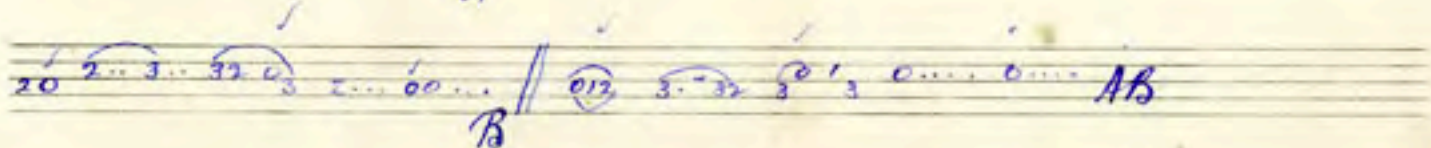
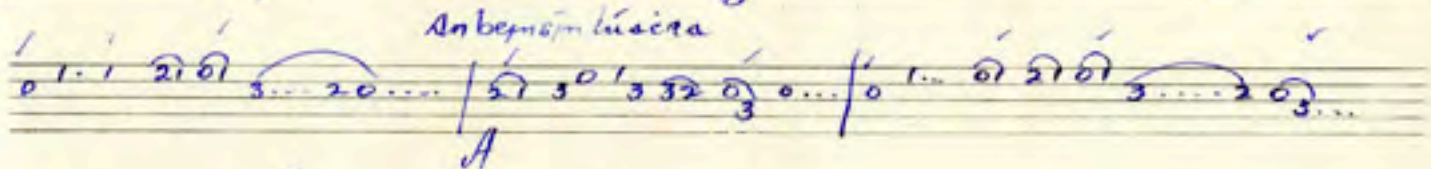
Ave - Shule Aroon



Old Irish Air



An beirnín lúchára



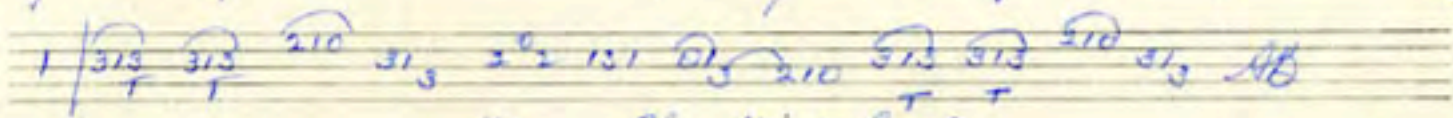
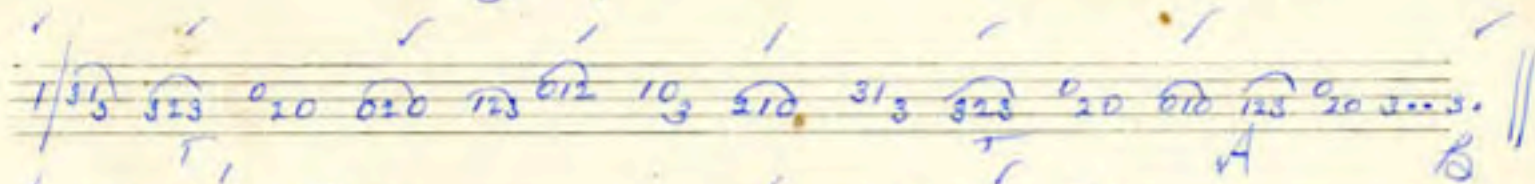
# Ape: - Stack of Barley

Handwritten musical notation for 'Ape: - Stack of Barley'. The notation consists of four staves of music, each with a treble clef and a common time signature (C). The notes are represented by numbers (0, 1, 2, 3) and are often grouped with slurs. The first staff begins with a '1' above the first note. The second staff ends with a double bar line and a '2' above it. The third staff begins with a '3' below the first note and ends with a double bar line and a 'B II' above it. The fourth staff ends with a double bar line and a 'B' above it.

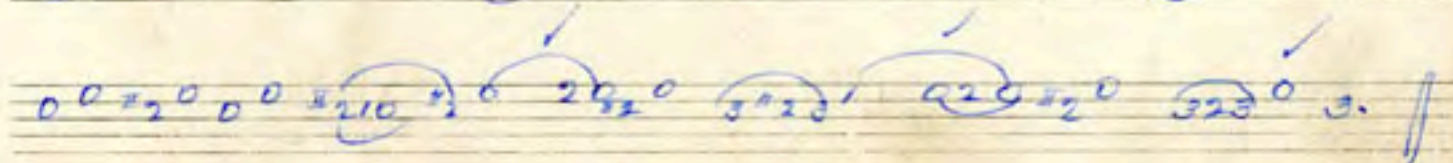
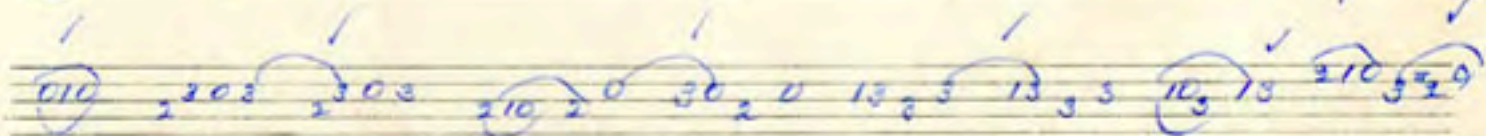
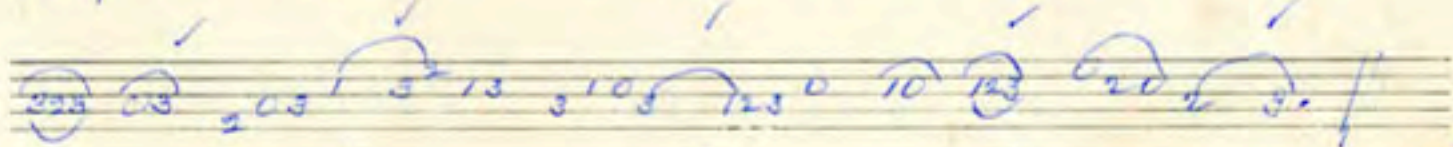
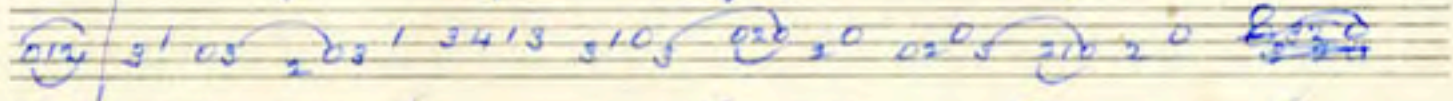
# Reel - Wind That shakes the barley.

Handwritten musical notation for 'Reel - Wind That shakes the barley.'. The notation consists of three staves of music, each with a treble clef and a common time signature (C). The notes are represented by numbers (0, 1, 2, 3) and are often grouped with slurs. The first staff begins with a '1' above the first note and ends with a double bar line and a 'R' above it. The second staff ends with a double bar line. The third staff ends with a double bar line.

# Jig



## After the High Level



# Jug. Queen of Fair.

Handwritten musical notation for the piece "Jug. Queen of Fair." The notation is organized into three systems, each with a numbered staff and a section marker (I, II, III).

**System I:**

- Staff 1: 1 | 212 010 02<sup>0</sup> 30<sup>2</sup> | 323 101 2<sup>11</sup> 123 | 212 010 02<sup>0</sup> 30<sup>2</sup> | 323 1<sup>0</sup> 3 2000.

**System II:**

- Staff 2: 2 | 13<sup>1</sup> 02<sup>0</sup> 323 02<sup>0</sup> | 02<sup>0</sup> 02<sup>0</sup> 323 1<sup>2</sup> | 13<sup>1</sup> 02<sup>0</sup> 323 02<sup>0</sup> | 123 1<sup>0</sup> 3 2000.

**System III:**

- Staff 3: 1 | 033 133 333 133 | 101 2<sup>0</sup> 131 020 | 033 133 333 133 | 123 1<sup>0</sup> 3 2000.
- Staff 4: 033 133 333 133 | 101 2<sup>0</sup> 131 020 | 313 202 103 203 | 123 1<sup>0</sup> 3 2000.

The notation includes various rhythmic values (e.g., 0, 1, 2, 3) and melodic lines with slurs and accents. Section markers I, II, and III are placed at the end of each system. There are also some handwritten marks like checkmarks and a 'T' at the end of the first staff.

6  
54



# Reel

3.  $\overset{\vee}{\circ}10$  2.  $\overset{\vee}{\circ}2$   $\overset{\vee}{\circ}2$   $\overset{\vee}{\circ}2$   $\overset{\vee}{3}210$  0330 2.  $\overset{\vee}{\circ}2$   $\overset{\vee}{3}10$  2 0.  $\overset{\vee}{\circ}12$   $\overset{\vee}{3}230$

2.  $\overset{\vee}{\circ}2$   $\overset{\vee}{\circ}2$   $\overset{\vee}{\circ}2$   $\overset{\vee}{3}210$  0330 2.  $\overset{\vee}{\circ}12$   $\overset{\vee}{3}242$   $\overset{\vee}{3}10$   $\overset{\vee}{3}$  || I

$\overset{\vee}{2}10$   $\overset{\vee}{\circ}0'0$   $\overset{\vee}{\circ}0$   $\overset{\vee}{2}10$   $\overset{\vee}{\circ}2$  1.  $\overset{\vee}{\circ}3$   $\overset{\vee}{2}10$   $\overset{\vee}{\circ}0'0$   $\overset{\vee}{\circ}0$   $\overset{\vee}{3}210$   $\overset{\vee}{\circ}20$ .  $\overset{\vee}{\circ}3$   $\overset{\vee}{2}10$

$\overset{\vee}{\circ}0'0$   $\overset{\vee}{\circ}0$   $\overset{\vee}{2}10$   $\overset{\vee}{\circ}2$  1.  $\overset{\vee}{\circ}2$   $\overset{\vee}{\circ}2$   $\overset{\vee}{\circ}2$   $\overset{\vee}{3}$   $\overset{\vee}{\circ}13$   $\overset{\vee}{2}402$   $\overset{\vee}{3}0$   $\overset{\vee}{2}0$  || II

# Seize of Ennis

$\overset{\vee}{1}0$   $\overset{\vee}{\circ}2$   $\overset{\vee}{\circ}2$   $\overset{\vee}{\circ}13$   $\overset{\vee}{\circ}0$   $\overset{\vee}{13}$   $\overset{\vee}{\circ}10$   $\overset{\vee}{3}1$   $\overset{\vee}{13}$  0  $\overset{\vee}{\circ}1$   $\overset{\vee}{\circ}2$   $\overset{\vee}{\circ}13$  0  $\overset{\vee}{13}$   $\overset{\vee}{\circ}10$   $\overset{\vee}{3}$ .  $\overset{\vee}{3}$  I

$\overset{\vee}{\circ}13$   $\overset{\vee}{3}$ .  $\overset{\vee}{14}$   $\overset{\vee}{4}3$   $\overset{\vee}{13}$  0  $\overset{\vee}{10}$   $\overset{\vee}{3}1$   $\overset{\vee}{10}$   $\overset{\vee}{13}$   $\overset{\vee}{3}$ .  $\overset{\vee}{14}$   $\overset{\vee}{4}3$   $\overset{\vee}{13}$   $\overset{\vee}{\circ}10$   $\overset{\vee}{3}$ .  $\overset{\vee}{3}$

# Fisherman's Hpe

012 30<sub>2</sub>0 3<sup>10</sup>3 2312 3<sup>10</sup>3 2002 3113 2002 10<sub>2</sub>0 30<sub>2</sub>0 3<sup>10</sup>3

2312 3<sup>10</sup>3 203 20<sub>23</sub> 03<sup>32</sup> 3. || 23 0<sub>202</sub> 0120 10<sub>3</sub>0

1231 20<sub>23</sub> 0121 0<sub>321</sub> 0. 32 1<sub>303</sub> 1321 0<sub>202</sub> 0120 0<sup>3</sup> 0120 23 3323.

Jig  
010 212 02 0 3.1 0<sub>20</sub> 10<sub>2</sub> 131 10<sub>2</sub> 010 212 02 0 3.1 0<sub>22</sub> 101 2000. //

0<sub>20</sub> 3.1 0<sub>20</sub> 3.1 AB

# Siege of Ennis (Contd.)

13 3. 14 43 13 6 10 31 13 0 01 02 01 3 0 13 6 10 3. 3 II

0 13 13 13 3. 43 13 43 20 13 13 13 3. 43 1 31 0 3 3 III

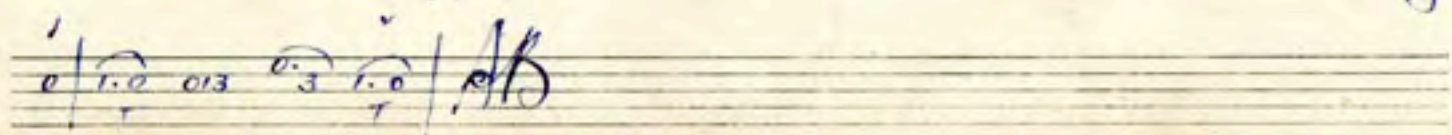
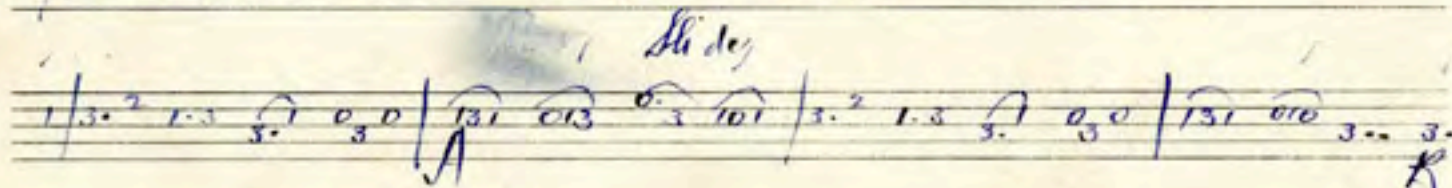
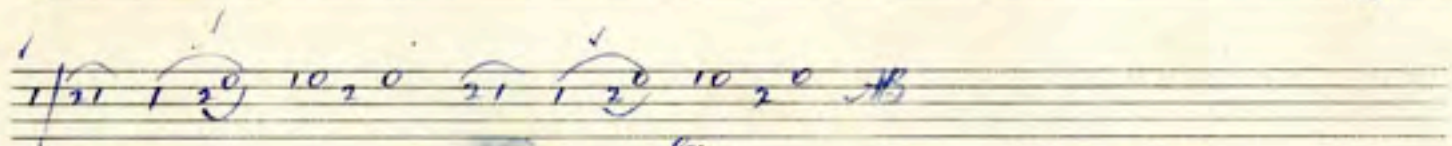
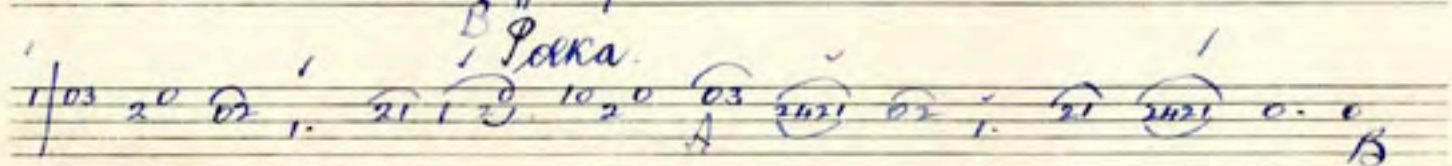
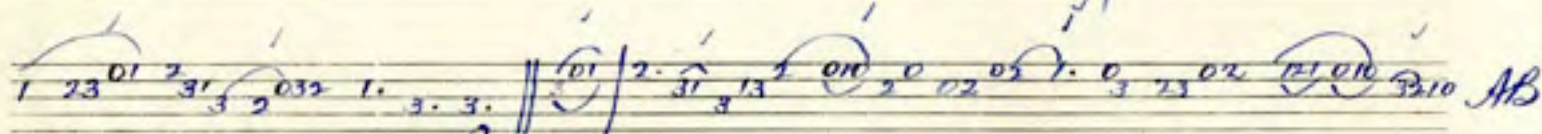
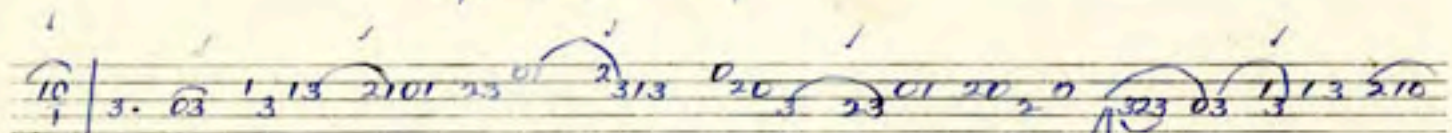
0 3 1 3 43 2. 31 3 1 0 3 10 3 1 3 23 43 2. 31 3 1 0 3 3 IV

*Fig.*

1 | 2.0 3.1 0.0 210 | 2.0 3.1 200 101 | 212 323 010 020 | 320 310 010 0. A B

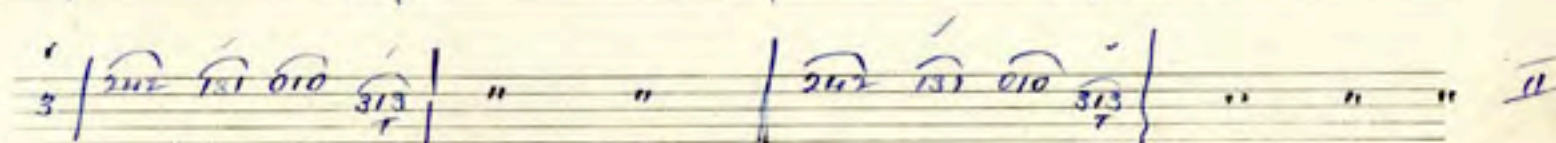
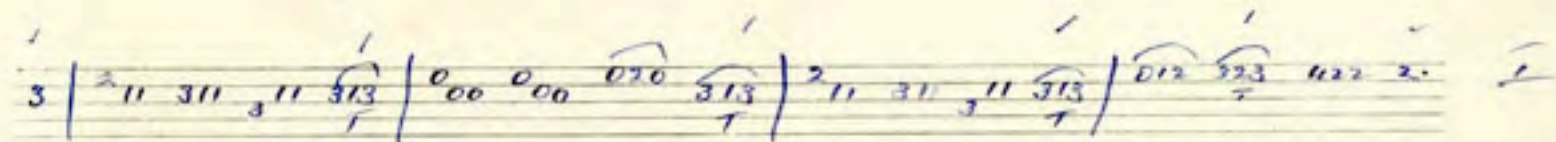
2 | 010 032 303 323 | 0.1 212 012 3.0 | 103 203 203 210 A B

Alpe :- Friendly visit

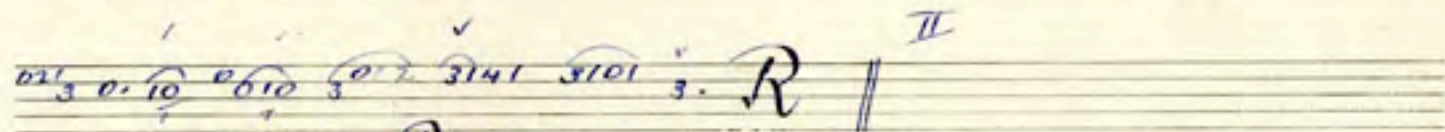
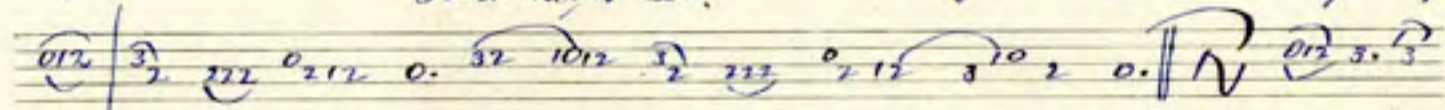


19/10/52

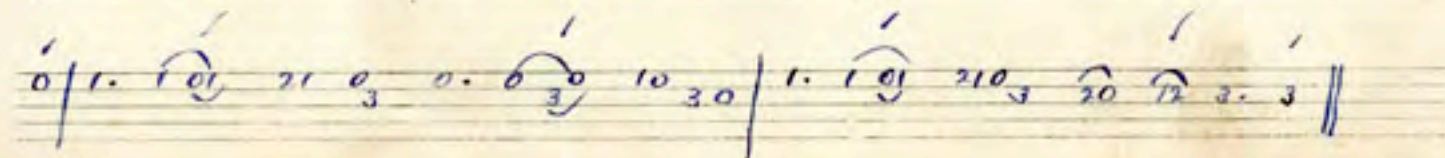
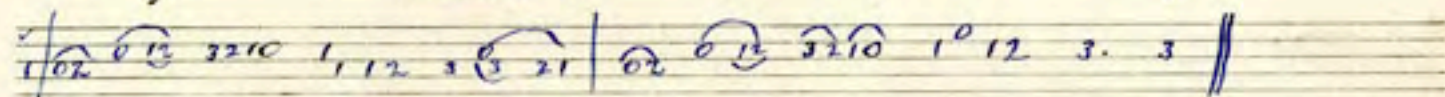
Jug. through the ladies.




Blackthorn Reel.



Polka.



Polka  My Bitches

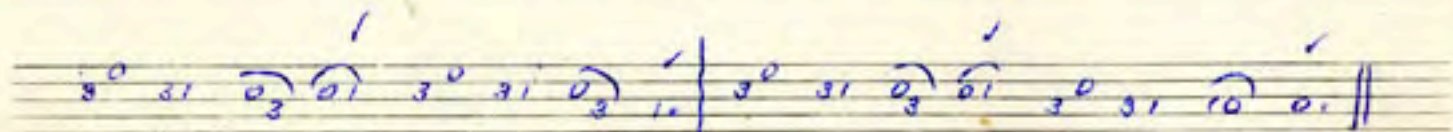
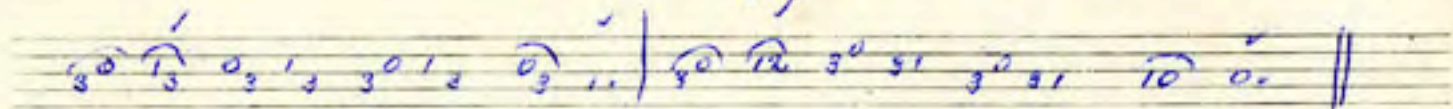
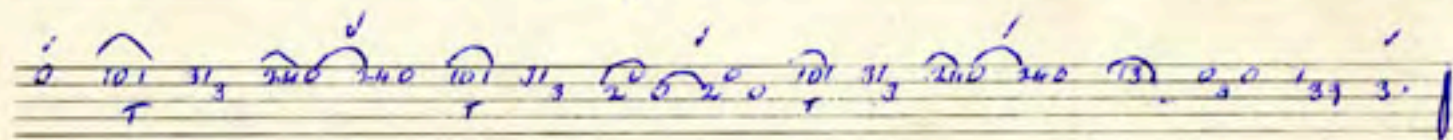
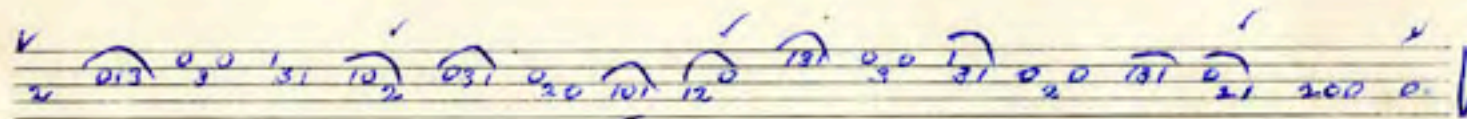
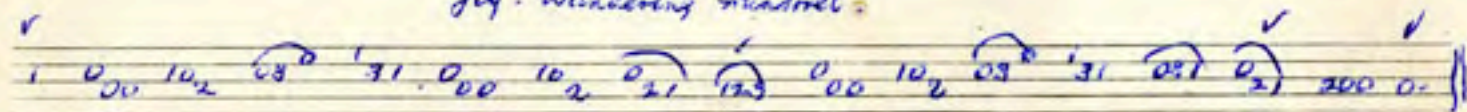


Fig. Wandering minstrel.



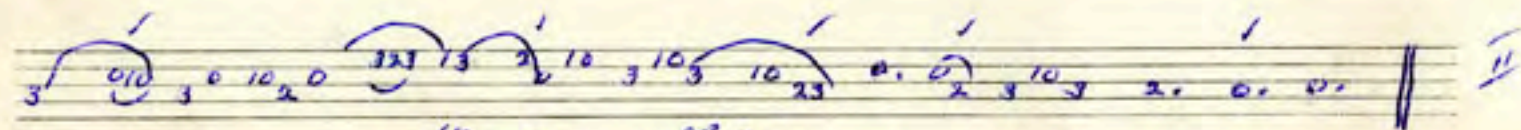
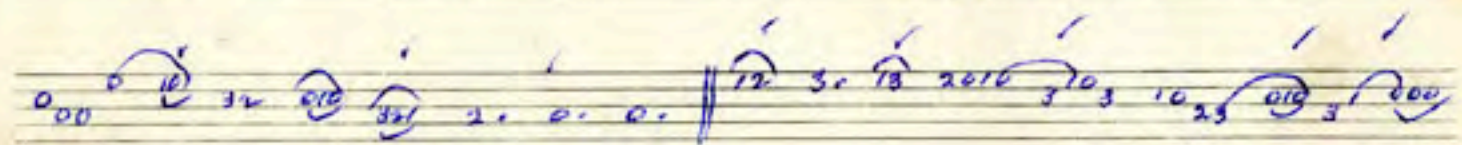
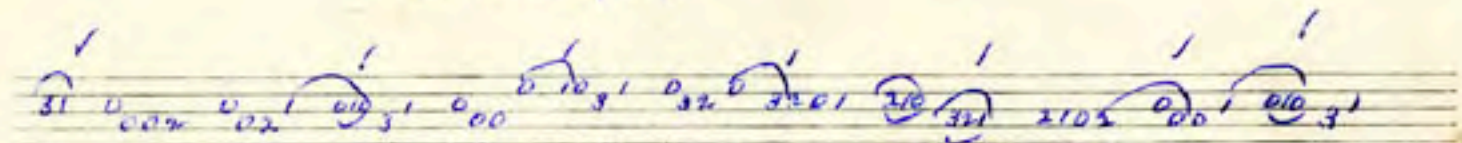
Reel - Morning Star

Handwritten musical notation for 'Reel - Morning Star' on a five-line staff. The notation consists of two staves of music. The first staff begins with a treble clef and a common time signature. The notes are written in a shorthand style with stems and flags, and are grouped by beams. There are several slurs and accents. A Roman numeral 'I' is written above the first measure of the second staff. The piece concludes with a double bar line and a dollar sign '\$'.

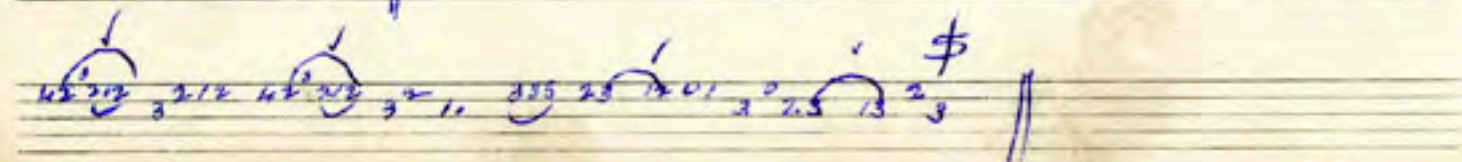
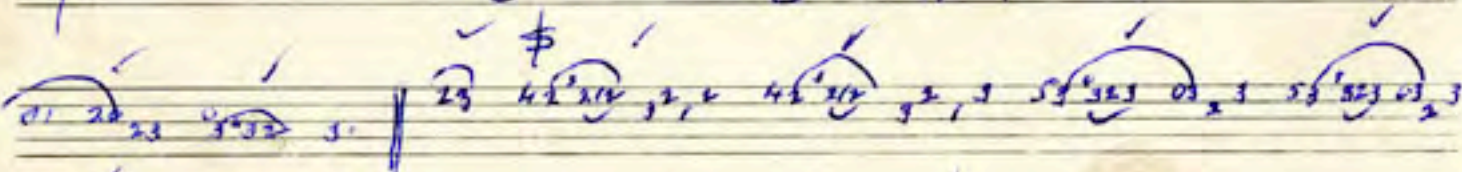
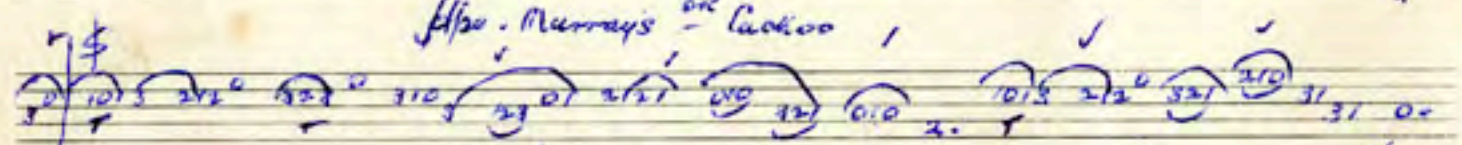
Reel - Women of the House

Handwritten musical notation for 'Reel - Women of the House' on a five-line staff. The notation consists of three staves of music. The first staff begins with a treble clef and a common time signature. The notes are written in a shorthand style with stems and flags, and are grouped by beams. There are several slurs and accents. The piece concludes with a double bar line.

Other Plains of Boyle

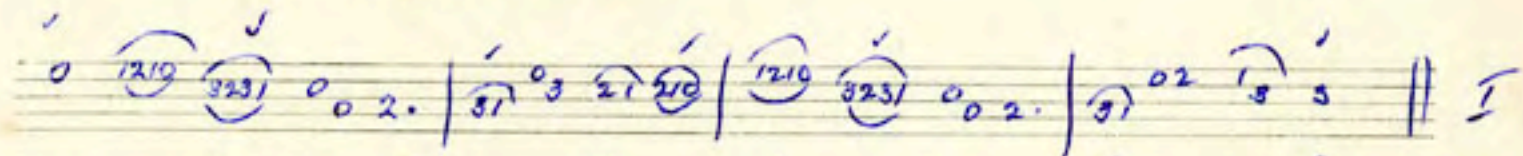


ff/20. Murray's or Cuckoo

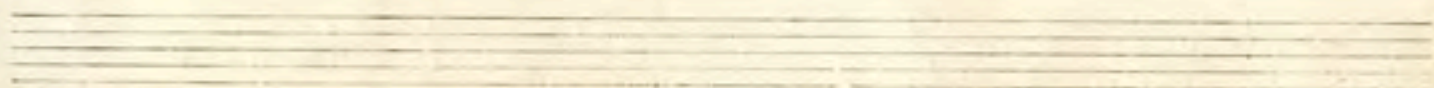
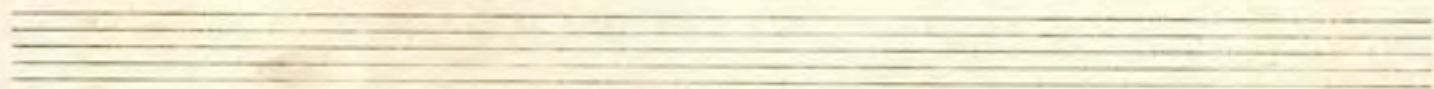
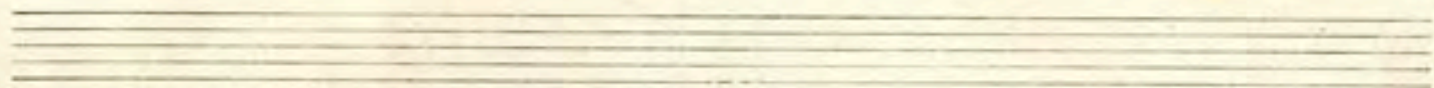
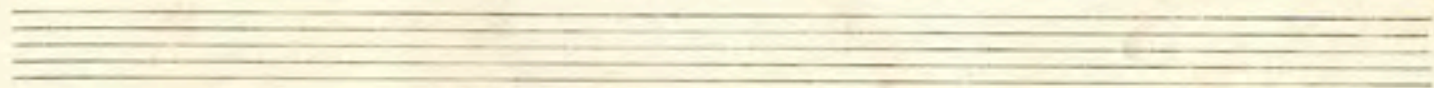
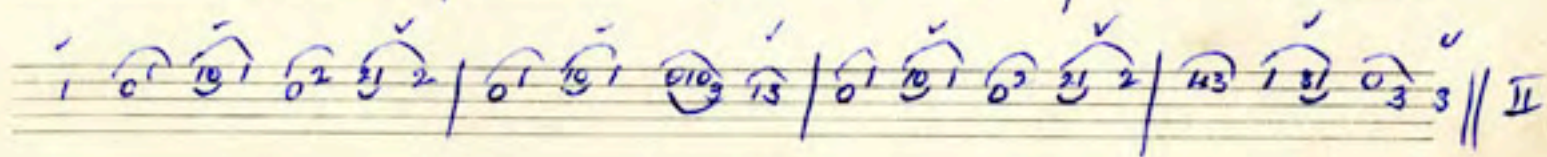


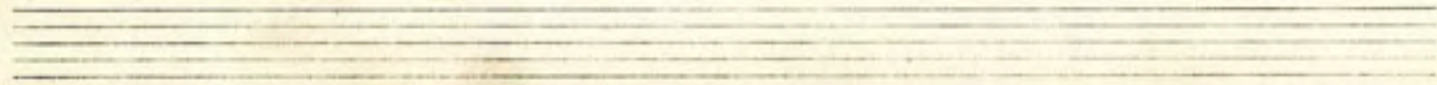
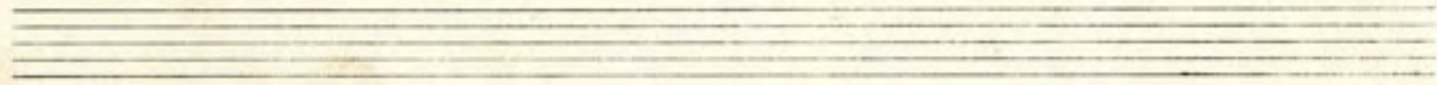
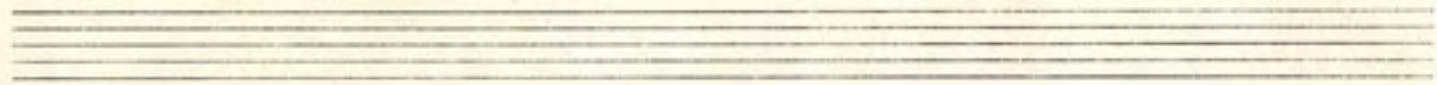
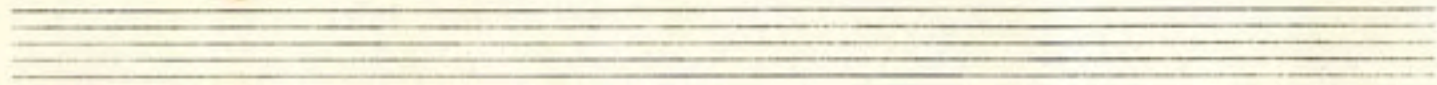
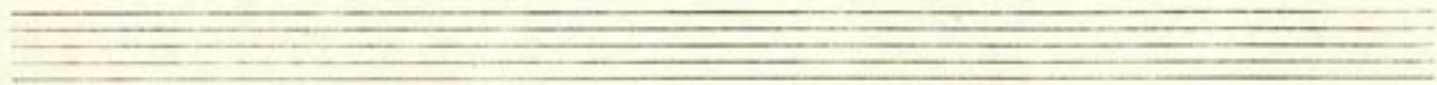
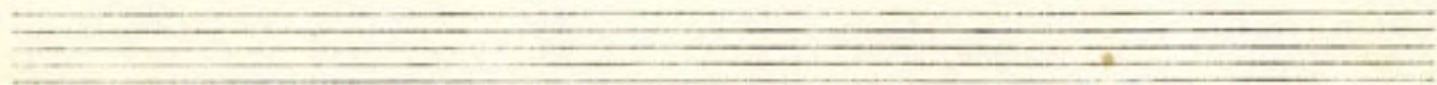


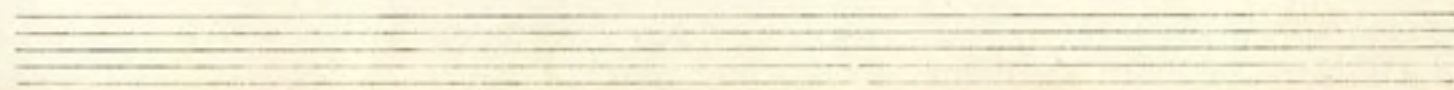
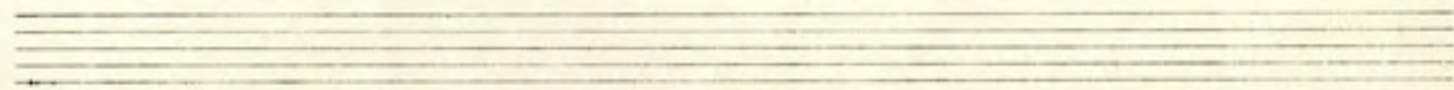
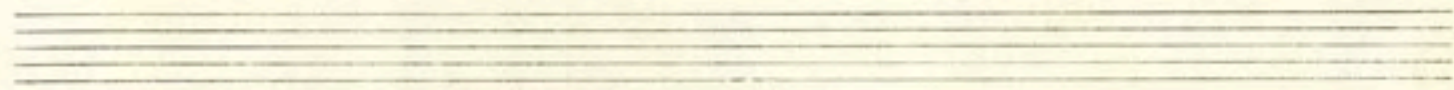
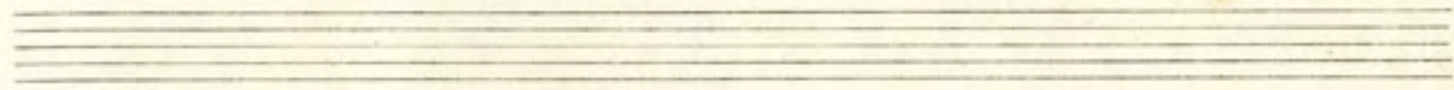
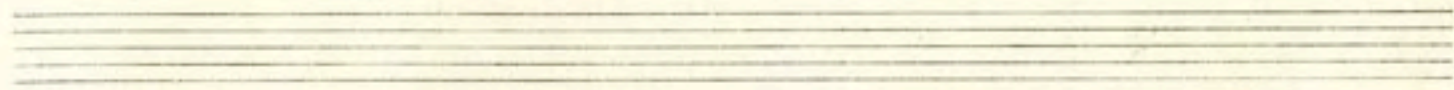
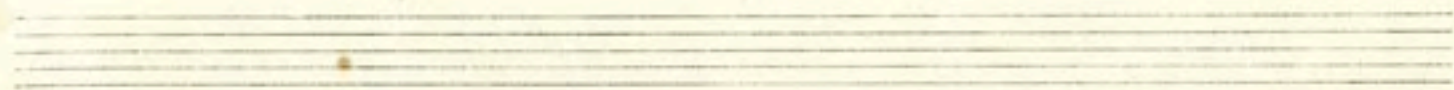
Weaver's Polka.



17  
60







# Reel Sally Gardens

10 3.  $\overset{\vee}{63} \overset{\vee}{13}$  3 1  $\overset{\vee}{514}$  1  $\overset{\vee}{51}$   $\overset{\vee}{11}$  3.  $\overset{\vee}{15}$  31  $\overset{\vee}{0120}$   $\overset{\vee}{3101}$  3.  $\overset{\vee}{62} \overset{\vee}{12}$  3 12.  $\overset{\vee}{01}$   $\overset{\vee}{31}$   $\overset{\vee}{111}$  3.  $\overset{\vee}{13}$   
A

0.  $\overset{\vee}{2120}$   $\overset{\vee}{203}$ .  $\overset{\vee}{12}$  3  $\overset{\vee}{2^2 21}$  2.  $\overset{\vee}{3^2}$  2.  $\overset{\vee}{4232}$  0.  $\overset{\vee}{03^2 32}$  3.  $\overset{\vee}{03^2 52}$  4  $\overset{\vee}{230}$  0.  $\overset{\vee}{2^2 21}$   $\overset{\vee}{2^2 21}$  4  $\overset{\vee}{232}$  0.  $\overset{\vee}{02}$   
AB

## Peg Sayers fig.

0  $\overset{\vee}{312}$   $\overset{\vee}{5^0}$   $\overset{\vee}{10_3}$   $\overset{\vee}{013}$   $\overset{\vee}{033}$   $\overset{\vee}{33}$   $\overset{\vee}{031}$   $\overset{\vee}{310}$   $\overset{\vee}{312}$   $\overset{\vee}{3^0}$   $\overset{\vee}{10_3}$   $\overset{\vee}{013}$   $\overset{\vee}{033}$   $\overset{\vee}{31}$   $\overset{\vee}{033}$  3. ||

3 |  $\overset{\vee}{212}$   $\overset{\vee}{012}$   $\overset{\vee}{10_3}$   $\overset{\vee}{031}$   $\overset{\vee}{033}$   $\overset{\vee}{033}$   $\overset{\vee}{33}$   $\overset{\vee}{031}$   $\overset{\vee}{212}$   $\overset{\vee}{3^2 3}$   $\overset{\vee}{432}$   $\overset{\vee}{10_3}$   $\overset{\vee}{013}$   $\overset{\vee}{03^0}$   $\overset{\vee}{133}$  3.

## Harvest fig

0  $\overset{\vee}{10_2}$   $\overset{\vee}{00}$   $\overset{\vee}{212}$   $\overset{\vee}{0_2 0}$  |  $\overset{\vee}{10_2}$   $\overset{\vee}{00}$   $\overset{\vee}{121}$   $\overset{\vee}{12^0}$  |  $\overset{\vee}{10_2}$   $\overset{\vee}{00}$   $\overset{\vee}{212}$   $\overset{\vee}{0}$  13 |  $\overset{\vee}{031}$   $\overset{\vee}{021}$   $\overset{\vee}{200}$   $\overset{\vee}{0_2}$   
B.

0 |  $\overset{\vee}{310}$   $\overset{\vee}{3^0 1}$   $\overset{\vee}{0_2 0}$   $\overset{\vee}{012}$  |  $\overset{\vee}{310}$   $\overset{\vee}{3^0 1}$   $\overset{\vee}{212}$   $\overset{\vee}{031}$  |  $\overset{\vee}{310}$   $\overset{\vee}{131}$   $\overset{\vee}{0_2 0}$  AB



### MANUSCRIPT MUSIC BOOKS

No. M1	10 × 5½ inches	6 Staves	36 Pages
No. M2	10 × 5½ " "	6 " "	20 " "
No. M3	11½ × 10 " "	12 " "	24 " "
No. M4	11½ × 10 " "	12 " "	8 " "
No. M5	10 × 8 " "	12 " "	24 " "

*(8 pages eight single lines and 12 pages ruled staff alternately)*

### MANUSCRIPT MUSIC PAPER

Size 11½ × 10 inches      12 Staves      Double Sheets

*Wholly produced in Dublin*

**THE EDUCATIONAL COMPANY OF IRELAND, LIMITED**  
89 TALBOT STREET, DUBLIN